

Building

3A

Floor Plans

Parkside, Knowledge Gateway

41,571 sq ft (3,862 sq m)

Available Now to Pre Let.
Suites from 1,927 sq ft
to 41,571 sq ft.

Ready to Occupy - Mid 2023

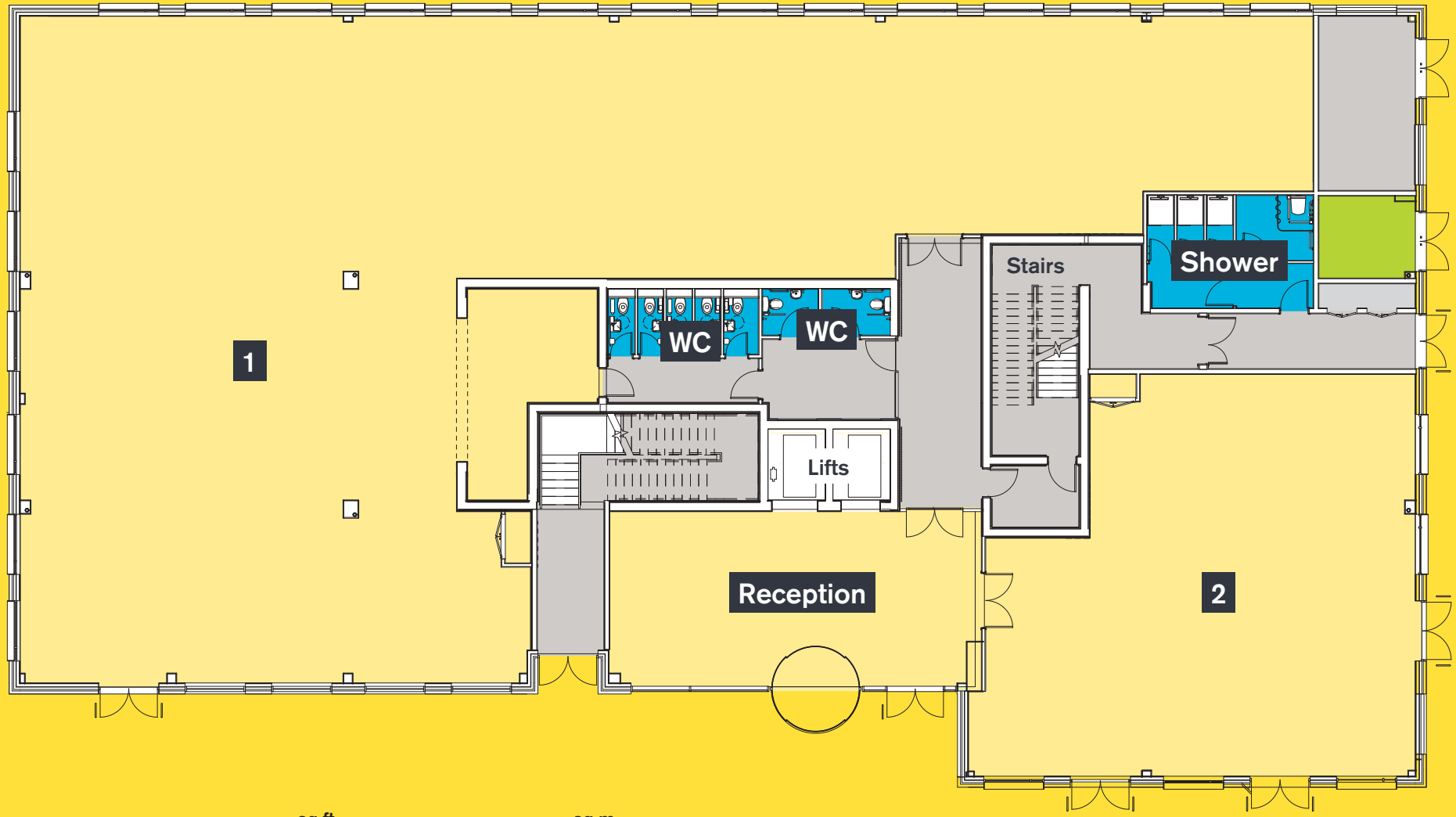
Knowledge Gateway, University of Essex Campus,
Nesfield Road, Colchester, Essex, CO4 3ZL.

Computer generated image is indicative only.



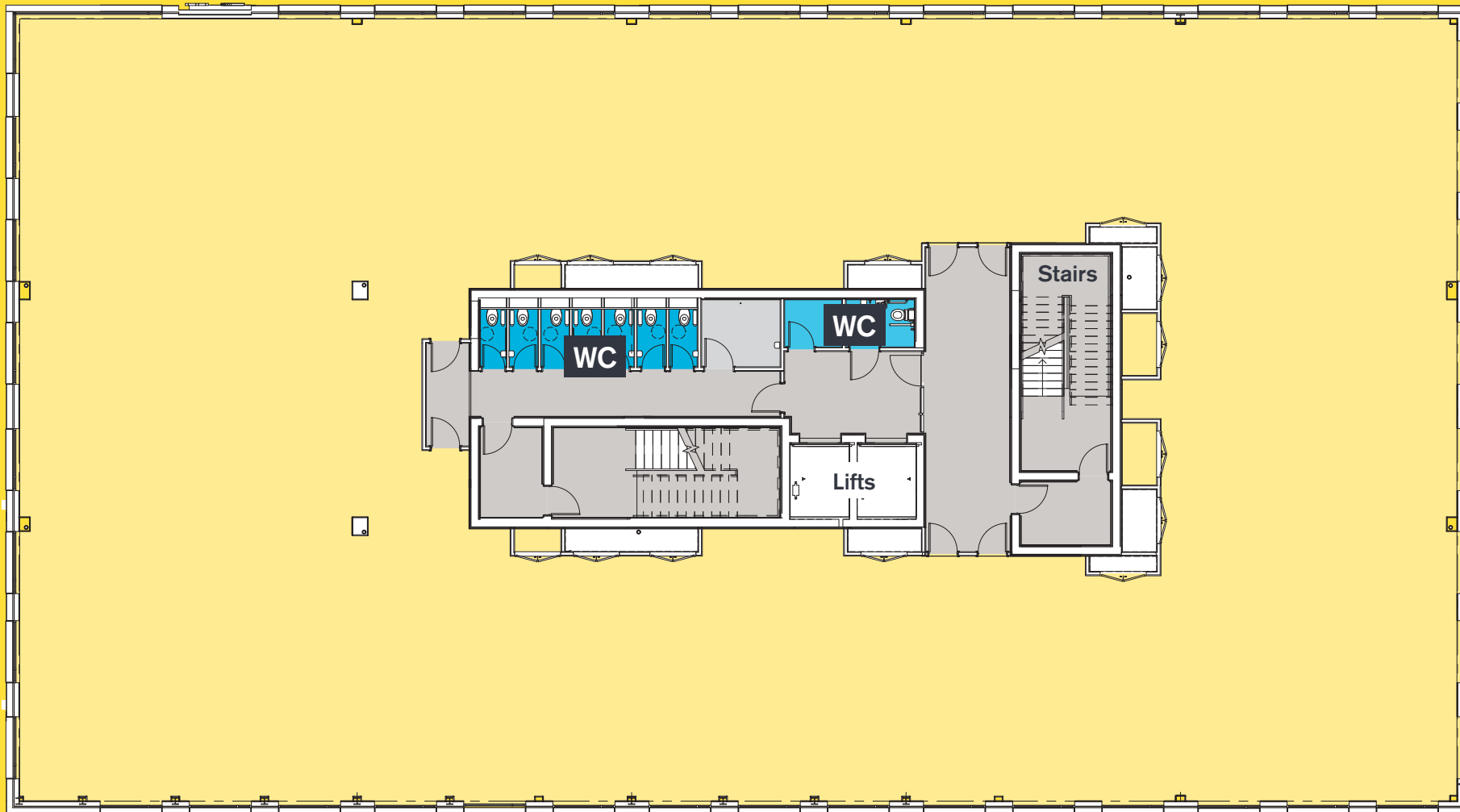
University of Essex

Ground Floor



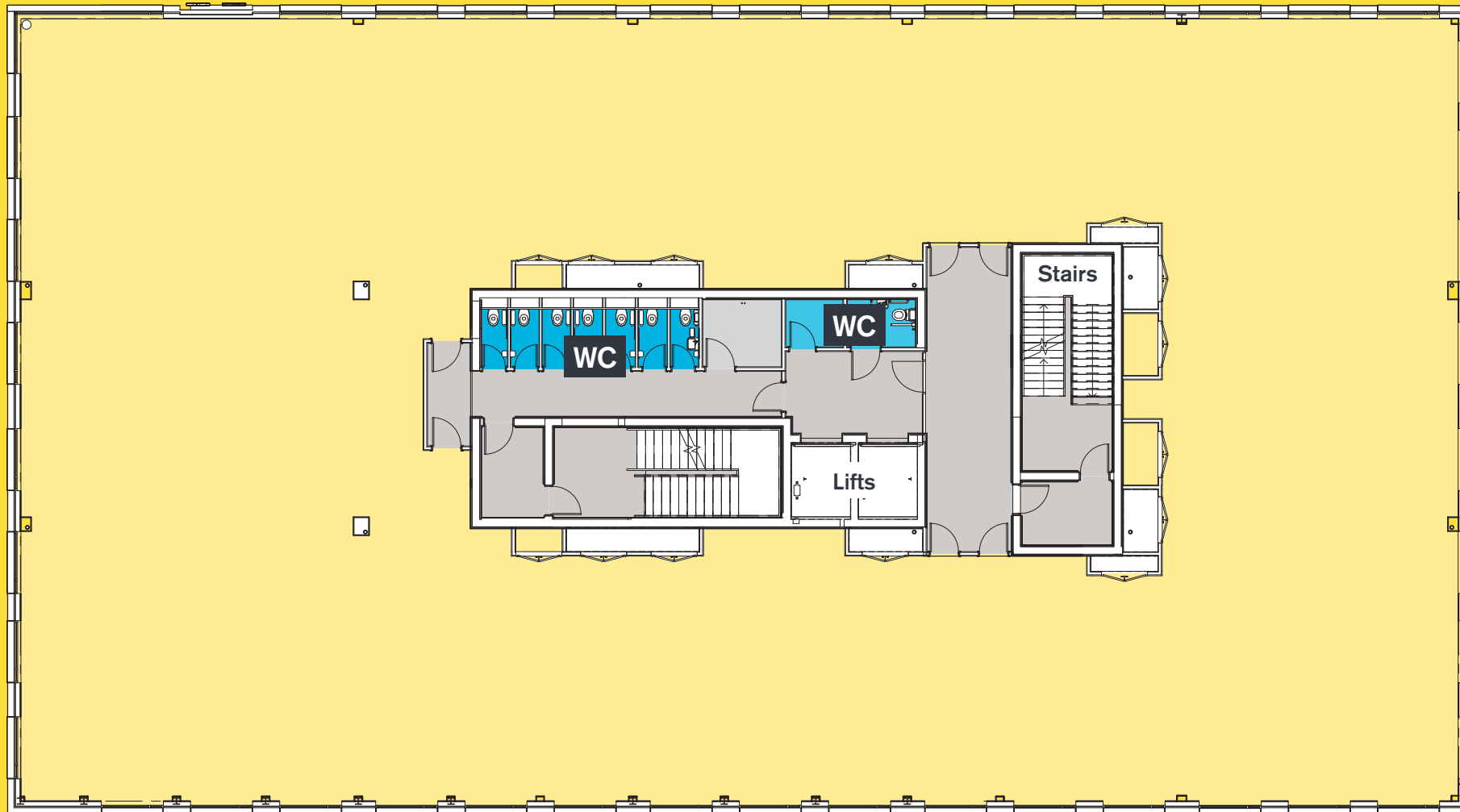
	sq ft	sq m
Ground Floor Reception	786	73
Ground Floor Office 1	1,927	179
Ground Floor Office 2	6,426	597
Total:	9,139	849

1st Floor



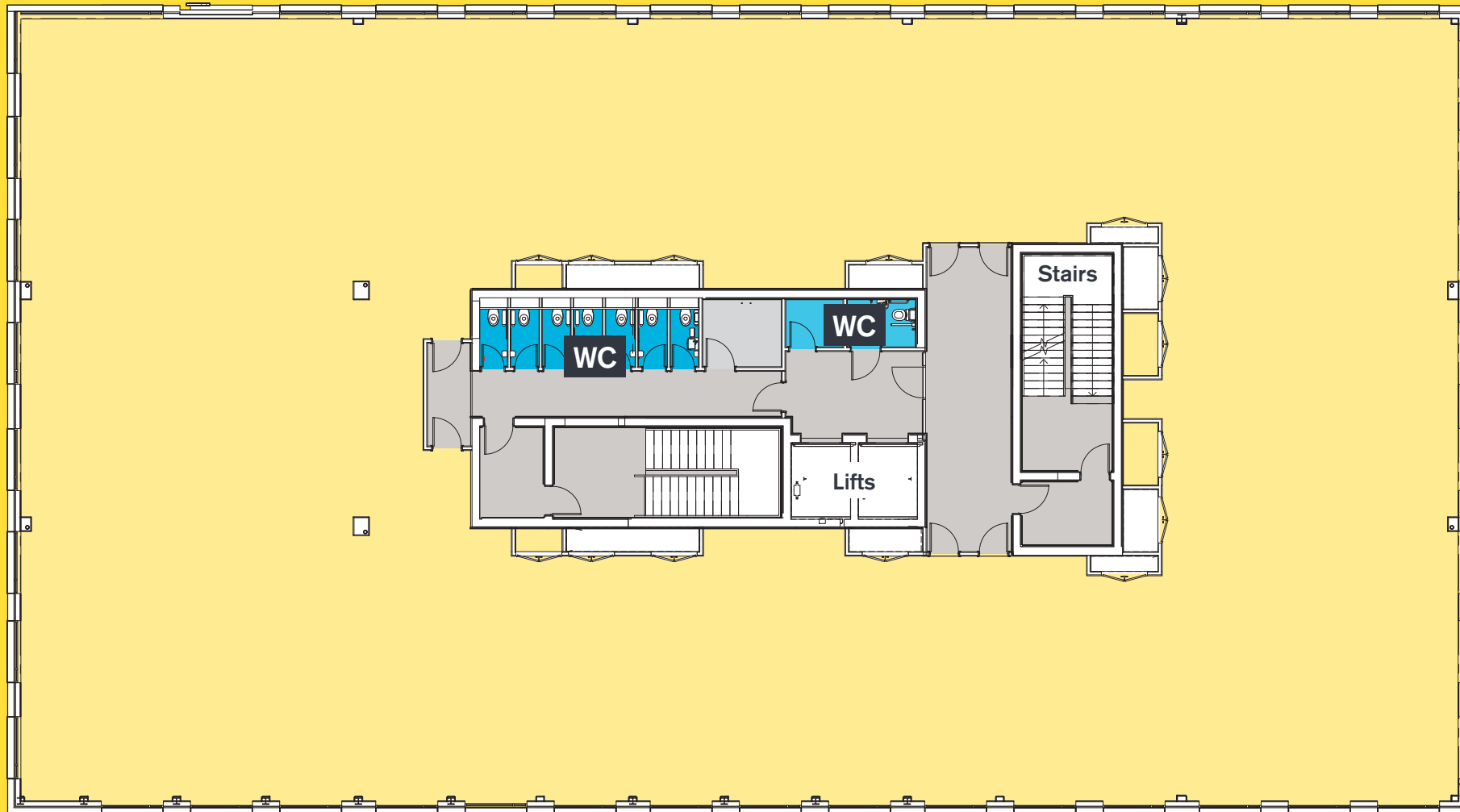
	sq ft	sq m
First Floor Office	10,807	1,004

2nd Floor



	sq ft	sq m
Second Floor Office	10,807	1,004

3rd Floor



	sq ft	sq m
Third Floor Office	10,818	1,005

Fresh space to help business flourish



Computer generated image is indicative only.

Further Information:

For further information and to view the building, please contact the Joint Agents.

Carter
Jonas

Ben Le Coq

02075 183 335
07776 181 799

ben.lecoq@carterjonas.co.uk

Whybrow

Ewan Dodds

01206 699 980
07957 862 773

ewan.dodds@whybrow.net